



Fast Secure Access

Keep your staff and visitors moving

Meesons Turnstile range

MEESONS
SAFE SECURE ACCESS

Anti-Tailgating | Counters & Screens | Automatic Doors | Access Control

Meesons was founded in 1864 and now with over 7 generations of family expertise, we are a key player in the UK security industry.

Since the beginning, our guiding principles have been to serve our customers with unparalleled quality and personal service.

Welcome to our Turnstile brochure...

Here you will find our complete turnstile range from waist height medium security options to full height solutions.

Meesons offer an unparalleled product range to suit all applications. With our wealth of knowledge and experience we are on hand to offer advice on your project.

For further information on our turnstiles please contact Meesons on:

0870 787 7846
enquiries@meesons.com
www.meesons.com



Security turnstiles are only part of our product range, please ask us for details of our other products:

- Anti Tailgating Solutions
- Counters and Screens
- Automatic Doors
- Access Control

Contents

EASYGATE Range 2

Waist Height Turnstiles:
BAR and ROUND Range 3 - 6

PEGAS Gates 7

Full Height Turnstiles:
REXON Range 8 - 9



EASYGATE RANGE



BAR Range



ROUND Range



PEGAS gates



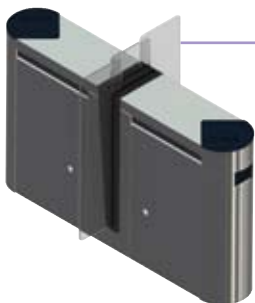
REXON Full Height Range

EASYGATE Range

Enter with style.

With style and grace the EASYGATE glass panels seamlessly and silently glide into attractive cabinets allowing authorised users through. Unauthorised users are prevented from entering through the barriers and an alarm can alert your security supervisors of an unauthorised access attempt.

Allowing up to 30 admissions per minute and available in a bespoke range of finishes, the EASYGATE reflects your individual interior style and can keep your staff and visitors moving.



EASYGATE LX

Available Versions: EASYGATE LX 1200 / EASYGATE LX 1800

Turnstile materials and surface finish treatment:

Frame: Steel construction, Anti-corrosive zinc protection

Top Lid: Brushed stainless steel AISI 304 (STANDARD)

Customisation: wood / artificial marble / stone / marble

Glass Wings: 8mm clear tempered safety glass (1200mm or 1800mm high)

Outer Covers: Brushed stainless steel AISI 304 (STANDARD)

Glass Slide covers: Black powder coating (standard), brushed stainless steel AISI304

Functionality: Bi-directional operation - electronically controlled. Access is controlled by identification, touch panel for remote control or by PC. An attempt of two people accessing one after another or the attempt at passing from both directions at the same time without previous identification of valid ID card is evaluated and either signalled by acoustic alarm or the turnstile is promptly closed

Safety elements: 40 sets of optical sensors control the passing of people through the turnstile corridor, detect an attempt at unauthorised passage and protect the passing people against injury. Control electronics enable setting of security levels to prevent unauthorised passage

Accessories:

- **Traffic light access panel:** GO/STOP images based on access right confirmation
- **Traffic light direction panel:** lane availability for a passage
- **Customisation:** of the top lid material
- **Backup accumulator:** During a power failure the accumulator ensures the turnstile operation for minimum 6 hours
- **Bracket for integration of proximity reader:** under dark glass of top lid
- **Touch panel:** for remote manual control of up to 4 lanes
- **Software:** for remote manual control/status monitoring of lanes via PC
- **Built-in collector:** of visitor's ID proximity cards



EASYGATE SG

Available Versions: EASYGATE SG-1000 / EASYGATE SG-1600 / EASYGATE SG-2000

Turnstile materials and surface finish treatment:

Frame: Steel construction, Anti-corrosive zinc protection

Top Lid: Brushed stainless steel AISI 304 (STANDARD)

Customisation: Wood / artificial marble / stone / marble

Glass Wings: 10mm clear tempered safety glass (STANDARD)

Outer Covers: Brushed stainless steel AISI 304 (STANDARD)

Glass Slide covers: 6.4mm clear laminated safety glass (STANDARD)

Functionality: Bi-directional operation - electronically controlled. Access is controlled by identification, touch panel for remote control or by PC. An attempt of two people accessing one after another or the attempt at passing from both directions at the same time without previous identification of valid ID card is evaluated and either signalled by acoustic alarm or the turnstile is promptly closed

Safety elements: 8 sets of optical sensors at EASYGATE SG - 1000 and 10 sets of optical sensors at EASYGATE SG - 1600/2000 control the passing people through the turnstile corridor, detect the attempt at unauthorised passage and protect the passing people against injury. Control electronics enable setting of security levels to prevent unauthorised passage

Accessories:

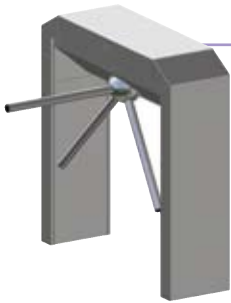
- **Traffic light access panel:** GO/STOP images based on access right confirmation/refuse from identification system
- **Traffic light direction panel:** lane availability for a passage
- **Customisation:** of the top lid material
- **Backup accumulator:** During a power failure the accumulator ensures the turnstile operation for minimum 6 hours
- **Bracket for integration of proximity reader:** under dark glass of top lid
- **Touch panel:** for remote manual control of up to 4 lanes
- **Software:** for remote manual control/status monitoring of lanes via PC
- **Built-in collector:** of visitor's ID proximity cards

Waist High BAR and ROUND Turnstiles

Classical, Smooth and Stylish - everything you need in a turnstile.

You need to control the flow of traffic into a medium security area but still want to keep the clean aesthetic look and feel of your building.

Meesons BAR and ROUND turnstiles could offer you a cost effective answer. The range includes the classical 3 BAR turnstile as well as the more modern ROUND version, giving you the perfect solution.



BAR BA

Turnstile materials and surface finish treatment:

Frame: Stainless steel sheet, thickness 1.5mm, surface finish - polished or brushed

Push bar: Stainless steel (standard / brushed)

Bars: Stainless steel tube \varnothing 40mm (standard / brushed)

Other mechanical parts: Zinc galvanised or blackened

Functionality: BAR-BA turnstile can be used in a wide range of applications and environments including exteriors. High-quality construction make this turnstile an ideal cost effective solution

Advanced control electronics enable simplistic set up of the operating mode and seamless integration with access control systems

Safety elements:

- Traffic-light information panel:

- Information about the turnstile accessibility in set direction
- Information about transit permission
- Information about invalid card

- ANTI-PANIC device: Ensures automatic folding of the horizontal turnstile arm in the event of power failure or emergency. The result is an unobstructed corridor for evacuation

- AntiClimb sensor: Sensors indicate an illegal attempt to climb over / crawl under turnstile's arm

BACK-UP accumulator: During a power failure the accumulator ensures the turnstile operation for a minimum of 6 hours

Accessories:

- Outdoor design: Automatic heating of drive unit controlled by thermosensor (necessary for turnstiles with motor drive units)

- Counter: Included in T-MON program it is possible to connect an external counter

- Touch control panel (touch panel):

- Device for remote manual control of turnstiles with wide range of operational settings
- LED diodes to inform operator about actual turnstile status including alarms
- Control of up to 4 turnstiles or 3 turnstiles + general emergency button



BAR GX

Turnstile materials and surface finish treatment:

- Top lid: Supplied in two variants:

- 1) Stainless steel sheet, thickness 1.5mm
- 2) Artificial marble

- Outer covers: Stainless steel sheet, thickness 1mm and 1.5mm

- Tripod hub: Brushed stainless steel

- Bars: Brushed stainless steel tube \varnothing 40mm

- Frame of turnstile: Steel zinc

- Other mechanical parts: Finished by galvanic zinking or blackening

Functionality: BAR-GX is characterised by its expressive and attractive design, silent, fluent and reliable running.

Advanced control electronics enable simplistic set up of the

operating mode and seamless integration with access control systems

Safety elements:

- Traffic-light information panel:

- Animation of identification card
- Information on turnstile accessibility
- Information on transit permission
- Information about invalid card

- Touch control panel (touch panel):

- Device for remote manual control of turnstiles with wide range of operational mode settings
- LED diodes to inform operator about actual turnstile status including alarms
- Control of up to 4 turnstiles or 3 turnstiles + general emergency button

- ANTI-PANIC device: ensures automatic folding of the horizontal turnstile arm in the event of power failure or emergency. The result is an unobstructed corridor for evacuation (Available by request)

- AntiClimb sensor: Sensors indicate an attempt to climb over/crawl under turnstile's arm

BACK-UP accumulator: During a power failure the accumulator ensures the turnstile operation for minimum 6 hours

Accessories:

- Counter: Included in T-MON program, it is possible to connect an external counter

- Outdoor design: Automatic heating of drive unit controlled by thermosensor (necessary for turnstiles with motor drive units)



BAR SKR

Turnstile materials and surface finish treatment:

- **Stainless steel design with spray application:** Zinc-galvanised steel tubes with wall thickness 2 and 4mm, surface-finished by powder coating (standard - black RAL 9005 GS)
- **Stainless design:** Stainless steel tubes with wall thickness 2 and 4mm completed with a stainless steel lid of 1mm thickness for covering armature (standard - brushed)
- **Tripod hub:** Always stainless steel (standard-brushed)
- **Bars:** Stainless steel tube \varnothing 40mm (standard-brushed)
- **Other mechanical parts:** Finished by galvanic zincing or blackening

Functionality: BAR SKR turnstile is a suitable device for any environment thanks to its compact design, impressive look and reliable operation together with the latest technology. Low operation costs and easy installation make the BAR SKR turnstile the most suitable device to control the movement

of persons at entrances with low passing frequency. High technical performance and good-quality constructional materials guarantee the reliable, safe and long-life running. Advanced control electronics enable simplistic set up of the operating mode and seamless integration with access control systems

Safety elements:

- **Traffic-light information panel:**
 - Animation of identification card showing necessary identification of the passing person
 - Information about the turnstile accessibility in set direction
 - Information about transit permission
 - Information about invalid cards
- **Touch control panel (touch panel):**
 - Device for remote manual control of turnstiles with wide range of operational mode settings
 - LED diodes to inform operator about actual turnstile status including alarms

- Control of up to 4 turnstiles or 3 turnstiles + general emergency button

BACK-UP accumulator: During a power failure the accumulator ensures the turnstile operation for minimum 6 hours

Accessories:

- **Counter:** Included in T-MON program, it is possible to connect an external counter
- **Outdoor design:** Automatic heating of drive unit controlled by thermosensor (necessary for turnstiles with motor drive units)
- **Specific variants:** Powder coating in RAL custom colour
- **Columns for accessories:** Considering the turnstile compact design it may be necessary to install identification terminals or other accessories (for example: Traffic Light LED information panel) on individual columns or posts



BAR EC

Turnstile materials and surface finish treatment:

- **Frame:** Galvanised steel sheet, thickness 2.5mm, surface - finished by powder coating (standard - RAL7040GS - grey)
- **Covers:** Galvanised steel sheet, thickness 1.5mm surface-finished by powder colour (standard - Antigua silver + transparent paint)
- **Tripod hub:** Stainless steel (standard - brushed), but in the case of design with foldable bars the cover is from galvanised steel sheet, thickness 1.5mm surface-finished by powder coating (standard - Antigua silver + transparent paint), or from stainless steel sheet (standard - polished)
- **Other mechanical parts:** Zinc galvanised or blackened.

Functionality: Specifically designed to work in environments that require a space efficient design but also a large capacity throughput, easy and quick identification of user, high quality and reliable running

Advanced control electronics enable simplistic set up of the

operating mode and seamless integration with access control systems

Safety elements:

- **Traffic-light information panel:**
 - Animation of identification card showing necessary identification of the passing person
 - Information about the turnstile accessibility in set direction
 - Information about transit permission
 - Information about invalid card
- **Touch control panel (touch panel):**
 - Device for remote manual control of turnstiles with wide range of operational mode settings
 - LED diodes to inform operator about actual turnstile status including alarms
 - Control of up to 4 turnstiles or 3 turnstiles + general emergency button

BACK-UP accumulator: During a power failure the accumulator ensures the turnstile operation for minimum 6 hours

Accessories:

- **Counter:** Included in T-MON program, it is possible to connect an external counter
- **Outdoor design:** Automatic heating of drive unit controlled by thermosensor (necessary for turnstiles with motor drive units)
- **Folding arm:** When the turnstile horizontal arm has been automatically folded down there is enough space for free passing or for movement of objects. The automatic folding of turnstile arm is activated by an impulse from control system (fire alarm system), external button or during a power failure (requires the connection of back-up accumulator and the unit monitoring the power supply situation)
- **Specific variants:** Powder coating in RAL custom colour
- **Columns for accessories:** Considering the turnstile compact design it may be necessary to install identification terminals or other accessories (for example: Traffic Light LED information panel) on individual columns or posts



ROUND E

Turnstile materials and surface finish treatment: Supplied in two variants:

- 1) ROUND E: Guiding railings made from stainless steel tube Ø 60mm with bevelled corners. Bevelled stainless steel handrail made from tube Ø 22mm on the upper edge of wing
 - 2) ROUND ES: (Economy variant) guiding railings made from stainless steel tube Ø 50mm with acute corners. Straight stainless steel handrail made from tube Ø 22mm on the upper edge of wing
- **Central column:** stainless steel tube Ø 168mm
 - **Wings:** 8mm tempered safety glass without any frame (standard-clear glass) with stainless steel push-bar on top. Stainless steel material is brushed as standard. Other mechanical parts of the turnstile are finished by galvanic zincing or blackening

Functionality: This turnstile is a suitable solution for entrance halls and lobbies where a high performance and aesthetics is required. The various designs of coloured glass make it possible to integrate this turnstile into any environment.

ROUND E is a bi-directional turnstile with electronic control, the 120° openings ensures comfortable, easy and safe access

Safety elements:

- Traffic-light information panel:

- Animation of identification card showing necessary identification of the passing person
- Information about the turnstile accessibility in set direction
- Information about transit permission

- Touch control panel (touch panel):

- Device for remote manual control of turnstiles with wide range of operational mode settings

- LED diodes to inform operator about actual turnstile status including alarms
- Control of up to 4 turnstiles or 3 turnstiles + general emergency button

BACK-UP accumulator: During a power failure the accumulator ensures the turnstile operation for minimum 6 hours

Accessories:

- **Counter:** Included in T-MON program, it is possible to connect an external counter
- **Outdoor design:** Automatic heating of drive unit controlled by thermosensor (necessary for turnstiles with motor drive units)
- **Specific variants:** Central column is made from stainless steel tube 204mm. A choice of coloured glass is available according to the architect's requirements
- **Columns for accessories:** Columns and holders for placing of identification readers or other accessories (for example: LED information panel)



ROUND F

Turnstile materials and surface finish treatment:

- **Central column:** Stainless steel tube Ø 168mm (standard brushed stainless steel)
- **Wings:** 8mm tempered safety glass, frameless (standard-clear glass) with stainless steel push-bar made from stainless steel tube Ø 22mm on the upper edge of glass
- **Guiding railings:** Stainless steel tube Ø 60mm (standard brushed stainless steel) with curved filled-in tempered safety glass, thickness 8mm (standard-transparent glass)
- **Other mechanical parts:** Finished by galvanic zincing or blackening

Functionality: Optimal capacity and above standard user comfort are the qualities characterising the ROUND F turnstile. The dominant use of glass for turnstile wings construction and guiding railings provides an open and elegant look

This turnstile is a suitable solution for entrance halls and lobbies where the main priorities are aesthetics and style of design. Turnstile ROUND F is a bi-directional turnstile with electronic control, the 120° openings ensure comfortable, easy and safe access

Safety elements:

- Traffic-light information panel:

- Animation of identification card showing necessary identification of the passing person
- Information about the turnstile accessibility in set direction
- Information about transit permission
- Information about invalid card

- Touch control panel (touch panel):

- Device for remote manual control of turnstiles with wide range of operational mode settings

- LED diodes to inform operator about actual turnstile status including alarms
- Control of up to 4 turnstiles or 3 turnstiles plus general emergency button

BACK-UP accumulator: During a power failure the accumulator ensures the turnstile operation for minimum 6 hours

Accessories:

- **Counter:** Included in T-MON program, it is possible to connect an external counter
- **Specific variants:** Central column is made from stainless steel tube 204mm. A choice of coloured glass is available according to the architect's requirements
- **Columns for accessories:** Columns and holders for placing of identification readers or other accessories (for example: LED information panel)



ROUND J

Turnstile materials and surface finish treatment:

- **Central column:** Stainless steel tube Ø 168mm (standard brushed stainless steel)
- **Wings:** 8mm tempered safety glass, frameless (standard-clear glass) with stainless steel push-bar made from stainless steel tube Ø 22mm on the upper edge of glass
- **Guiding railings:** Stainless steel tube Ø 60mm (standard brushed stainless steel) with curved filled-in tempered safety glass, thickness 8mm (standard-transparent glass)
- **Other mechanical parts:** Finished by galvanic zincing or blackening

Functionality: ROUND J is safe and effective.

It's stainless steel design of the main turnstile parts guarantees its long-life running in interior or exterior environments.

Constructional design ensures better protection in exterior

applications against weather attack and splashing water up to 1m high, except power washing.

Turnstile ROUND J is a bi-directional turnstile with electronic control, the 120° openings ensure comfortable, easy and safe access. It is equipped with a motor drive unit that offers a silent and fluent operation ensuring a high user comfort

Safety elements:

- Traffic-light information panel:

- Animation of identification card showing necessary identification of the passing person
- Information about the turnstile accessibility in set direction
- Information about transit permission
- Information about invalid card

- Touch control panel (touch panel):

- Device for remote manual control of turnstiles with wide range of

operational mode settings

- LED diodes to inform operator about actual turnstile status including alarms
- Control of up to 4 turnstiles or 3 turnstiles + general emergency button

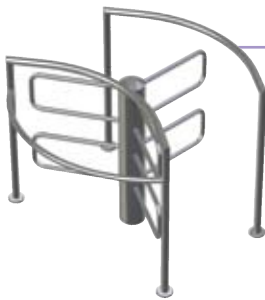
BACK-UP accumulator: During a power failure the accumulator ensures the turnstile operation for minimum 6 hours

Accessories:

- **Counter:** Included in T-MON program, it is possible to connect an external counter

- **Specific variants:** Central column is made from tube Ø 204mm, choice of coloured glass according to architect's request

- **Columns for accessories:** Columns and holders for placing of identification readers or other accessories (for example: LED information panel)



ROUND J90 | DUO

Turnstile materials and surface finish treatment:

The turnstile is supplied in two variations:

- 1) ROUND J90: wings made from stainless steel tube Ø 40mm
- 2) ROUND J90 U: wings made from bent stainless steel tube Ø 30mm

- **Central column:** Stainless steel tube Ø 168mm
- **Inner Guiding Railings:** stainless steel tube Ø 60mm

Stainless steel material is standardly brushed. Other mechanical parts of turnstile are finished by galvanic zincing or blackening

Functionality: ROUND J90 is characterised by its robust design, safe and effective operation together with high quality material processing. Stainless steel design of the main turnstile parts guarantees its long-life running in interior or exterior environments whilst constructional design ensures better protection in exterior applications against weather

attacks and splashing water high up to 1m, except power washing.

Turnstile ROUND J90 is a bi-directional turnstile with electronic control, the 90° openings ensure comfortable and safe access

Safety elements:

- **Guiding Railings:** If needed the ROUND J90 can be supplied with outer guiding railings with minimal length of 900mm.

- Traffic-light information panel:

- Animation of identification card showing necessary identification of the passing person
- Information about the turnstile accessibility in set direction
- Information about transit permission
- Information about invalid card

- Touch control panel (touch panel):

- Device for remote manual control of turnstiles with wide range of operational mode settings

• LED diodes to inform operator about actual turnstile status including alarms

• Control of up to 4 turnstiles or 3 turnstiles plus general emergency button

BACK-UP accumulator: During a power failure the accumulator ensures the turnstile operation for minimum 6 hours

Accessories:

- **Outdoor design:** Automatic drive units heating controlled by thermoregulator

- **Counter:** Included in T-MON program, it is possible to connect an external counter

- **Specific variants:** Central column made from stainless steel tube Ø 204mm for the type ROUND J90 U. Wider passage from 550mm to 600mm

- **Columns for accessories:** Columns and holders for placing of identification readers or other accessories (for example: LED information panel)

PEGAS Gates

Keeping your building open to all.

You want ensure your building is open to all but at the same time it needs to be secure to prevent unauthorised access. Turnstiles provide you with controlled access but they they can be restrictive to DDA access, visitors and deliveries to your building.

The PEGAS Gate provides your turnstile system with the ability to accommodate every authorised user and is the perfect accessory to EASYGATE, ROUND and BAR turnstiles. It can be configured for automatic opening on approach or integrated with access control systems with a total maximum opening of 180°.



PEGAS GL

Turnstile materials and surface finish treatment:

- **Central column:** Stainless steel tube, Ø 168mm (standard - brushed stainless steel)
- **Wing:** Tempered safety glass, thickness 8 mm, frameless (standard - clear glass, width: 850 mm, transit width: 900mm)
- **Other mechanical parts:** Finished by galvanic zincing or blackening

The width of transit, at the one-wing gate opening, can be almost 1100mm (wing width 1000 mm).

In cases where wider transit is required two PEGAS GL gates can be installed in tandem. Advanced control electronics ensures a synchronous operation of this tandem gates configuration

Functionality: Attractive and sophisticated design make PEGAS-GL a suitable partner for all turnstiles. Applicable for entrance halls and lobbies where movement is supervised

Safety elements:

- Touch control panel:

- Device for remote manual control with wide range of operational mode settings
- LED diodes to inform operator about actual turnstile status including alarms
- Control of up to 4 turnstiles or 3 turnstiles + general emergency button

BACK-UP accumulator: During a power failure the accumulator ensures continuous running for minimum 6 hours

Accessories:

- **Columns and holders for accessories:** For placing of identification readers or other accessories (for example: Traffic Light LED information panel)
- **Push bar:** Stainless steel push bar from tube Ø 22mm located on the upper side of glass wing (standard - brushed stainless steel). Recommended for operation mode of opening by pushing on the gate's wing
- **Specific variants:**
 - Choice of wing's width (max 1000mm)
 - Choice of glass colour
 - Central column from tube Ø 204mm



PEGAS SF/J

Turnstile materials and surface finish treatment:

- **Standard surface treatment:** Brushed stainless steel Central column: stainless steel tube, Ø 168mm
- **Wing:** the frame is from stainless steel tube Ø 40mm (standard size w x h - 850 x 410mm for passage 900mm)
- **Other mechanical parts:** Finished by galvanic zincing or blackening. The width of transit, at the gate opening can be varied according to the wing's design up to 1000mm

In cases where wider transit is required it is possible to install two PEGAS SF/J gates in tandem. Advanced control electronics ensures a synchronous operation of this tandem gates configuration

Functionality: Can be installed separately or together with turnstiles in environments where movement of persons

is supervised. The stainless steel design guarantees long durability in interior or exterior environments. The frame of the wing can be modified according to architect's requirements or filled with glass panels

The PEGAS-J has two horizontal stainless steel wings suited to match ROUND-J turnstile

PEGAS-SF/J has a motor driven unit that creates a silent and fluent operation ensuring high user comfort

Safety elements:

- Touch control panel:

- Device for remote manual control with wide range of operational mode settings
- LED diodes to inform operator about actual turnstile status including alarms
- Control of up to 4 turnstiles or 3 turnstiles + general emergency button

BACK-UP accumulator: During a power failure the accumulator ensures continuous operation for minimum 6 hours

Accessories:

- **Columns and holders for accessories:** For placing of identification readers or other accessories (for example: Traffic Light LED information panel)
- **Push bar:** Stainless steel push bar from tube Ø 22mm located on the upper side of glass wing (standard - brushed stainless steel). Recommended for operation mode of opening by pushing on the gate's wing
- **Specific variants:** Choice of wing's width and design (max 1000mm). Central column Ø 204mm
- **Outdoor design:** Automatic heating of motor drive units controlled by thermo sensor

REXON Full Height Turnstiles

Full Height Security.

You need a solution that can withstand all the elements that nature throws at it and a system that is reliable and robust enough to keep your premises safe.

The Meesons REXON turnstile range comes with anti-corrosive surface of all components as standard and their high quality finish guarantees reliable operation not only in indoor environments but also under harsh and extreme conditions of outdoor installations.

These turnstiles offer bi-directional options with electronic control and the 120° openings ensure comfortable, easy and safe access.



REXON DEA

Turnstile materials and surface finish treatment: The turnstile is supplied in two variations:

- 1) REXON DEA: Push bar from stainless steel tube Ø 108 with wings made by bars from stainless steel tube Ø40mm (standard: polished)
- 2) REXON-DEA-U: Assembled rotor covered with stainless steel sheet, thickness 1.2mm with wings made by trombone stainless steel tube Ø 22mm (standard: polished)

- **Frame:** Stainless steel sheet, thickness 3mm, surface-finished by powder coating (standard: RAL 9005 GS-black)
- **Covers and roof:** Steel sheet, thickness 1.5mm, surface-finished by powder coating (standard: RAL 5010 GS-blue)
- **Top and roof sides:** Steel sheet, thickness 1.5mm, surface-finished by powder coating (standard: RAL 9005 GS-black)
- **Internal barrier:** Steel tube Ø 22mm (standard: RAL 9005 GS-black)

- Other mechanical parts:

Finished by galvanic zincing or blackening

Functionality: Robust full-height construction, high quality, trouble-free and easy operation are the hallmarks of the REXON DEA turnstile making it ideal for high security applications where the full automatic identification of people is required. Modern design, and colour variability make this turnstile unique

Safety elements:

- **Additional locking:** Additional electromagnetic brake to increase the turnstile resistance against unauthorised passage
- **Lighting:** Turnstile interior
- **Traffic-light information panel:**
 - Information about the turnstile accessibility
 - Information on transit permission
 - Information about invalid card

BACK-UP accumulator: During a power failure the accumulator ensures continuous operation for minimum 6 hours

Accessories:

- **Columns and holders for accessories:** Columns and holders for placing of identification readers or other accessories (for example: LED information panel).
- **Anchoring frame:** Steel frame to fix the turnstile for example through the stone block paving
- **Counter:** Included in T-MON program it is possible to connect an external counter
- **Specific variants:**
 - Complete stainless steel finish
 - RAL custom colour
 - Economic version with rotor and tube arms made of hot-dip galvanised
 - Steel (available only for REXON DEA model)



REXON DEA DUO

Turnstile materials and surface finish treatment:

- **Pushbar:** Stainless steel tube Ø 108mm (standard: polished), wings of barrier: stainless steel tube Ø 40mm (standard: polished)
- **Frame:** Steel sheet, thickness 3mm, surface-finished by powder coating (standard: RAL 9005 GS-black)
- **Covers and roof:** Steel sheet, thickness 1.5mm, surface-finished by powder coating (standard: RAL 5010 GS-blue)
- **Top and roofside:** Steel sheet, thickness 1.5 mm, surface-finished by powder coating (standard: RAL 9005 GS-black)
- **Internal barrier:** Steel tube Ø 22 mm (standard: RAL 9005 GS-black)
- **Other mechanical parts:** Galvanic zincing or blackening

Functionality: Ideal choice where space is limited and high access frequency and security is required. This turnstile has double capacity provided by two rotors that ensure the individual passage in each direction

Safety elements:

- **Additional locking:** Additional electromagnetic brake to increase the turnstile resistance against unauthorised passage
- **Lighting:** Turnstile interior
- **Traffic-light information panel:**
 - Information about the turnstile accessibility in set direction
 - Information about transit permission
 - Information about invalid card

BACK-UP accumulator: During a power failure the accumulator ensures continuous operation for minimum 6 hours

Accessories:

- **Columns and holders for accessories:** For identification of readers or other accessories (for example: LED information panel)
- **Anchoring frame:** Steel frame to fix the turnstile for example through the stone block paving
- **Counter:** Included in T-MON program, it is possible to connect an external counter
- **Specific variants:**
 - Stainless steel design
 - Custom colour in spray according to RAL
 - Economy variant of the push bar from steel tubes, surface finished by zinc dipping



REXON ERA

Turnstile materials and surface finish treatment:

- **Top panel:** Steel sheet, thickness 3mm, surface-finished by powder coating (standard: RAL 9006 PE)
- **Cover of top panel:** Steel sheet, thickness 1.5mm, surface finished by powder coating (standard: RAL 9006 PE)
- **Rotor column:** Steel tube Ø 108mm, hot-dip galvanised
- **Rotor arms:** Steel tube Ø 40mm, hot-dip galvanised
- **Internal barrier:** Closed thin-walled profile and steel tube Ø 40mm, hot-dip galvanised
- **Outer barrier:** Steel profile, hot-dip galvanised
- **Other mechanical parts:** Finished by galvanic zincing or blackening

Functionality: Light-weight steel dimensional construction, trouble-free and simple operation make it ideal for high security applications

Safety elements:

- **Additional locking:** Additional electromagnetic brake to increase the turnstile resistance against unauthorised passage
- **Lighting:** Turnstile interior
- **Traffic-light information panel:**
 - Information about the turnstile accessibility in set direction
 - Information about transit permission
 - Information about invalid card

BACK-UP accumulator: During a power failure the accumulator ensures continuous operation for minimum 6 hours

Accessories:

- **Columns and holders for accessories:** For placing of identification readers or other accessories (for example: LED information panel).
- **Anchoring frame:** Steel frame to fix the turnstile for example through the stone block paving
- **Counter:** Included in T-MON program, it is possible to connect an external counter
- **Specific variants:**
 - Stainless steel rotor with arms
 - Stainless steel design
 - RAL custom colour
 - External brake for maximum security against vandalism



REXON DEA GLASS

Turnstile materials and surface finish treatment:

- **Frame:** Made by welding of stainless steel profiles
- **Roof:** Frame from stainless steel profiles covered by stainless steel sheet, thickness 1.5mm
- **Rotor:** Steel construction covered by stainless steel sheet, thickness 1.5mm
- **Glass wings:** 8mm tempered safety glass
- **Glass panels of turnstile:** 8mm curved laminated safety glass
- **Push-bar on wings:** Stainless steel tube Ø 30mm
- **Other mechanical parts:** Finished by galvanic zincing or blackening. Stainless steel elements are standardly from quality AISI 304 (brushed)

Functionality: Three-wing turnstile door system with impressive design, made by combining stainless steel with glass elements. Suitable for interiors where a high performance and aesthetics are demanded. This turnstile is equipped with the integrated sensor monitoring in the "no go" area of the turnstile in case of unauthorised passage

Safety elements:

- **Additional locking:** Additional electromagnetic brake to increase the turnstile resistance against unauthorised passage
- **Lighting:** Turnstile interior
- **Traffic-light information panel:**
 - Information about the turnstile accessibility in set direction

- Information about transit permission
- Information about invalid card

BACK-UP accumulator: During a power failure the accumulator ensures continuous operation for minimum 6 hours

Accessories:

- **Columns and holders for accessories:** for placing of identification readers or other accessories (for example: LED information panel)
- **Anchoring frame:** Steel frame to fix the turnstile for example through the stone block paving
- **Counter:** Included in T-MON program it is possible to connect an external counter

www.meesons.com

For further details
please contact us:

0870 787 7846
enquiries@meesons.com
www.meesons.com



Meesons product range includes:

Anti-Tailgating
Counters & Screens
Automatic Doors
Access Control

MEESONS
SAFE SECURE ACCESS

Meesons A. I. Limited Cardea House | Sidings Business Park | Skipton | North Yorkshire
BD23 1TB | United Kingdom | T +44 (0)1756 797727 | F +44 (0)1756 797570
enquiries@meesons.com | www.meesons.com
Registered in England & Wales (01633050)